

## SELF-EXTINGUISHING PLIABLE CONDUITS

### Light pliable conduit FK9

GENERAL CHARACTERISTIC	
Name: FK9	Standard: IEC EN 61386-1; IEC EN 61386-22
Colour: RAL 7035 grey	Application field: electrical systems and/or data transmission for all types of environment.
Material: PVC	Installation type: mainly flush-mounted in walls and/or ceilings.
Length supplied: depends on the diameter	Suitable for applications inside false ceilings and floating floors.

Characteristic according to IEC/EN 61386-22	Test results	Classification code
Resistance to compression:	Light 320 N	2
Resistance to impact:	Light - 1 J	2
Lower temperature range:	-5 °C	2
Upper temperature range:	+60 °C	1
Resistance to bending:	Pliable	2
Electrical characteristics:	With electrical insulating characteristics	2
Protection against ingress of solid objects		
	Without accessories:	-
	With GF coupling:	4
Protection against ingress of water		0
Resistance against corrosion:	Not applicable to plastic conduit systems	-
Resistance to flame propagation:	Non-flame propagating	1

## ARCOBALENO SELF-EXTINGUISHING PLIABLE CONDUITS

### Medium pliable conduit FK 15

GENERAL CHARACTERISTIC	
Name: FK15	Standard: IEC EN 61386-1; IEC EN 61386-22
Colour: medium natural white, black, green, light blue, brown, lilac	Application field: electrical systems and/or data transmission for all types of environment.
Material: PVC	Installation type: mainly flush-mounted in floors, walls and/or ceilings.
Length supplied: depends on the diameter	Suitable for applications inside false ceilings and floating floors.

Characteristic according to IEC/EN 61386-22	Test results	Classification code
Resistance to compression:	Medium - 750 N	3
Resistance to impact:	Medium - 2 J	3
Lower temperature range:	-5 °C	2
Upper temperature range:	+60 °C	1
Resistance to bending:	Pliable	2
Electrical characteristics:	With electrical insulating characteristics	2
Protection against ingress of solid objects		
	Without accessories:	-
	With GF coupling:	4
Protection against ingress of water		0
Resistance against corrosion:	Not applicable to plastic conduit systems	-
Resistance to flame propagation:	Non-flame propagating	1
Insulation resistance: > 100 MΩ at 500 V for 1 minute		
Dielectric rigidity: 2000 V for 15 minutes		

## COEXTRUDED SELF-EXTINGUISHING PLIABLE CONDUITS

### Medium pliable conduit FK-Xtreme

GENERAL CHARACTERISTIC	
Name: FK-Xtreme	Standard: IEC EN 61386-1; IEC EN 61386-22
Colour(*): light grey, black, green, light blu, brown, lilac	Application field: electrical systems and/or data transmission for all types of environment.
Material: PVC (internal wall), PVC plastified (external coating)	Installation type: mainly for self-leveling liquid concrete. Suitable also to be installed flush-mounted in floors, walls and ceilings and inside false ceilings and floating floors.
Length supplied: depends on the diameter	

(\*) Conduits have inner walls colour natural gray, with exception of light gray versions that have inner walls colour dark gray.

Characteristic according to IEC/EN 61386-22	Test results	Classification code
Resistance to compression:	Medium - 750 N	3
Resistance to impact:	Medium - 2 J	3
Lower temperature range:	-5 °C	2
Upper temperature range:	+60 °C	1
Resistance to bending:	Pliable	2
Electrical characteristics:	With electrical insulating characteristics	2
Protection against ingress of solid objects		
	Without accessories:	0
	With GF coupling:	4
Protection against ingress of water		0
Resistance against corrosion:	Not applicable to plastic conduit systems	0 (**)
Resistance to flame propagation:	Non-flame propagating	1
Insulation resistance: > 100 MΩ at 500 V for 1 minute		
Dielectric rigidity: 2000 V for 15 minutes		

(\*\*) The conduits being made of plastic material are naturally resistant to corrosion.

## SELF-EXTINGUISHING PLIABLE CONDUITS

### Medium pliable conduit FK MF

GENERAL CHARACTERISTIC	
Name: FKMF	Standard: IEC EN 61386-1; IEC EN 61386-22
Colour: Grey	Application field: electrical systems and/or data transmission for all types of environment.
Material: Polypropilene	Installation type: flush installation, surface installation, buried in concrete.
Length supplied: depends on the diameter	Suitable for soil, machinery and equipment installations.

Characteristic according to IEC/EN 61386-22	tests results	Classification code
Resistance to compression:	Medium - 750 N	3
Resistance to impact:	Medium - 2 J	3
Lower temperature range:	-5 °C	2
Upper temperature range:	+105 °C	3
Resistance to bending:	Pliable	2
Electrical characteristics:	With electrical insulating characteristics	2
Protection against ingress of solid objects		-
	Without accessories:	-
	With GF coupling:	4
Protection against ingress of water:		0
Resistance against corrosion:	Not applicable to plastic conduit systems	-
Resistance to flame propagation:	Non-flame propagating	1
Insulation resistance: > 100 MΩ at 500 V for 1 minute		
Dielectric rigidity: 2000 V for 15 minutes		

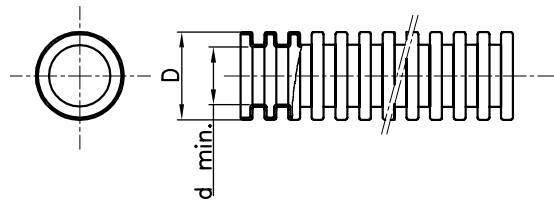
**SELF-RECOVERING, SELF-EXTINGUISHING, HALOGEN-FREE PLIABLE CONDUITS****Self recovering, self extinguishing, LOW SMOKE ZERO HALOGEN ICTA conduits****GENERAL CHARACTERISTIC**

Name: ICTA	Application field: electrical systems and/or data transmission for all types of environment. Particularly suitable for installations in public places: schools, cinemas, theatres, underground systems, etc.
Colour: grey RAL 7035 - dark grey - green - light blue	Installation type: mainly flush-mounted in floors, walls and ceilings buried in concrete. Suitable for applications inside false ceilings and floating floors
Material: polypropylene self-extinguishing halogen-free, in compliance with CEI EN 60754-2 (CEI EN 50267-2-2) and EN 61034-2	
Length supplied: depends on the diameter	
Standard: IEC EN 61386-1; IEC EN 61386-22	

Characteristic according to IEC/EN 61386-22	Test results	Classification code
Resistance to compression:	Medium - 750 N	3
Resistance to impact:	Heavy - 6 J	4
Lower temperature range:	-5 °C	2
Upper temperature range:	+90 °C	2
Resistance to bending:	Pliable / self recovering	3
Electrical characteristics:	With electrical insulating characteristics	2
Protection against ingress of solid objects		
	Without accessories:	-
	With GF coupling:	4
Protection against ingress of water		0
Resistance against corrosion:	Not applicable to plastic conduit systems	-
Resistance to flame propagation:	Non-flame propagating	1
Insulation resistance: > 100 MΩ at 500 V for 1 minute		
Dielectric rigidity: 2000 V for 15 minutes		

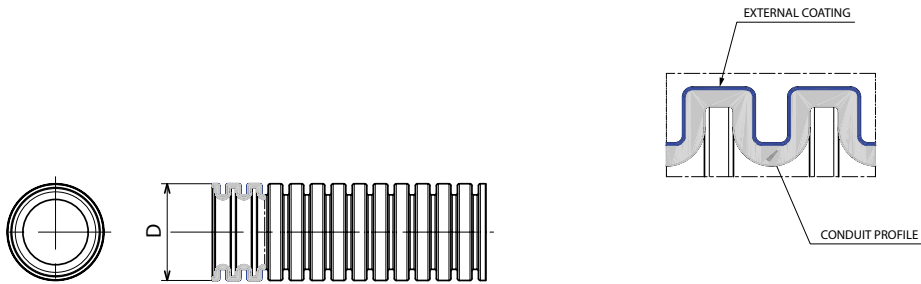
Dimension tables

FK 15 - ARCOBALENO MEDIUM PLIABLE CONDUIT



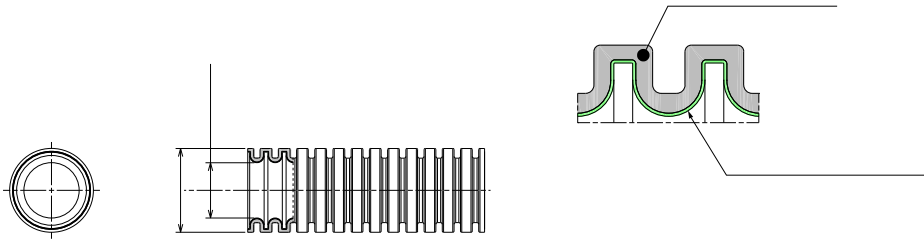
Natural white		Black		Green		Light blue		Brown		Lilac		conduit Ø (mm)	D	d. min.	
Without cable puller-feeder	With cable puller-feeder	Without cable puller-feeder	With cable puller-feeder	Without cable puller-feeder	With cable puller-feeder	Without cable puller-feeder	With cable puller-feeder	Without cable puller-feeder	With cable puller-feeder	Without cable puller-feeder	With cable puller-feeder				
Code	Code	Code	Code	Code	Code	Code	Code	Code	Code	Code	Code				
DX 16 216 R	DX 16 316 R	DX 15 016 R	DX 15 116 R	DX 15 216 R	DX 15 316 R	DX 15 416 R	DX 15 516 R	DX 15 616 R	DX 15 716 R	DX 15 816 R	DX 15 916 R	16	16	0 -0.3	10.7
DX 16 220 R	DX 16 320 R	DX 15 020 R	DX 15 120 R	DX 15 220 R	DX 15 320 R	DX 15 420 R	DX 15 520 R	DX 15 620 R	DX 15 720 R	DX 15 820 R	DX 15 920 R	20	20	0 -0.3	14.1
DX 16 225 R	DX 16 325 R	DX 15 025 R	DX 15 125 R	DX 15 225 R	DX 15 325 R	DX 15 425 R	DX 15 525 R	DX 15 625 R	DX 15 725 R	DX 15 825 R	DX 15 925 R	25	25	0 -0.4	18.3
DX 16 232 R	DX 16 332 R	DX 15 032 R	DX 15 132 R	DX 15 232 R	DX 15 332 R	DX 15 432 R	DX 15 532 R	DX 15 632 R	DX 15 732 R	DX 15 832 R	DX 15 932 R	32	32	0 -0.4	24.3
DX 16 240 R		DX 15 040 R	DX 15 140 R	DX 15 240 R		DX 15 440 R		DX 15 640 R		DX 15 840 R		40	40	0 -0.4	31.2
DX 16 250 R		DX 15 050 R	DX 15 150 R	DX 15 250 R		DX 15 450 R		DX 15 650 R		DX 15 850 R		50	50	0 -0.5	39.6
DX 16 263 R		DX 15 063 R	DX 15 163 R									63	63	0 -0.6	50.6

FK-Xtreme - COEXTRUDED SELF-EXTINGUISHING PLIABLE CONDUITS



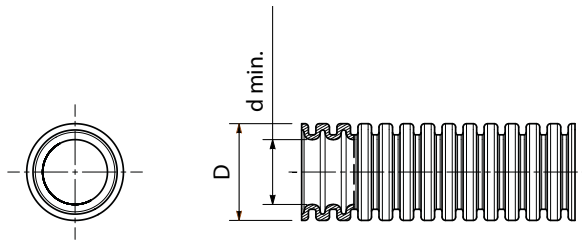
Light grey	Black	Green	Light blue	Brown	Lilla	Ø conduit (mm)	D	
Code	Code	Code	Code	Code	Code			
DX 16 220 X	DX 15 020 X	DX 15 220 X	DX 15 420 X	DX 15 620 X	DX 15 820 X	20	20	0 -0.3
DX 16 225 X	DX 15 025 X	DX 15 225 X	DX 15 425 X	DX 15 625 X	DX 15 825 X	25	25	0 -0.4
DX 16 232 X	DX 15 032 X	DX 15 232 X	DX 15 432 X	DX 15 632 X	DX 15 832 X	32	32	0 -0.4
DX 16 240 X	DX 15 040 X	DX 15 240 X	DX 15 440 X	DX 15 640 X	DX 15 840 X	40	40	0 -0.4

## Medium pliable conduit FK MF



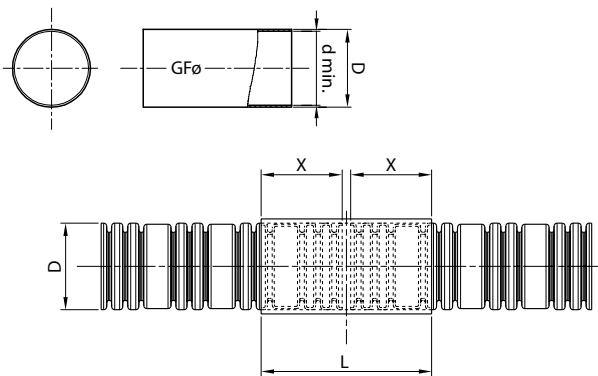
Code	Ø conduit (mm)	D	d.min	inner coating	inner coating (colour)
DX 24 216 N	16	16 0 - 0.3	10.15		
DX 24 220 N	20	20 0 - 0.3	13.20	(*)	GREEN
DX 24 225 N	25	25 0 - 0.4	17.50	(*)	
DX 24 232 N	32	32 0 - 0.4	22.90	(*)	
DX 24 240 N	40	40 0 - 0.4	29.90		
DX 24 250 N	50	50 0 - 0.5	39.20		
DX 24 263 N	63	63 0 - 0.6	51.10		

**ICTA - SELF-RECOVERING, SELF-EXTINGUISHING, HALOGEN-FREE MEDIUM PLIABLE CONDUIT**



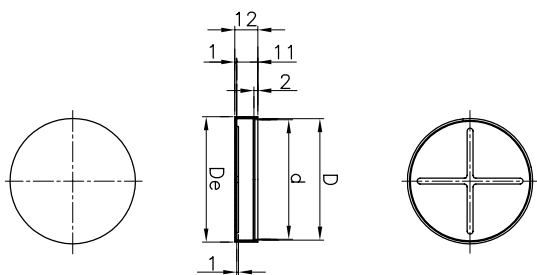
Grey RAL 7035		Dark grey		Green		Light blue					
Without cable puller-feeder	With cable puller-feeder	Without cable puller-feeder	With cable puller-feeder	Without cable puller-feeder	With cable puller-feeder	Without cable puller-feeder	With cable puller-feeder				
Code	Code	Code	Code	Code	Code	Code	Code	conduit Ø (mm)	D	d. min.	
DX 20 016 R	DX 20 116 R	DX 20 416 R	DX 20 516 R	DX 22 016 R	DX 22 116 R	DX 23 016 R	DX 23 116 R	16	16	0 -0.3	10.7
DX 20 020 R	DX 20 120 R	DX 20 420 R	DX 20 520 R	DX 22 020 R	DX 22 120 R	DX 23 020 R	DX 23 120 R	20	20	0 -0.3	13.4
DX 20 025 R	DX 20 125 R	DX 20 425 R	DX 20 525 R	DX 22 025 R	DX 22 125 R	DX 23 025 R	DX 23 125 R	25	25	0 -0.4	17.8
DX 20 032 R	DX 20 132 R	DX 20 432 R	DX 20 532 R	DX 22 032 R	DX 22 132 R	DX 23 032 R	DX 23 132 R	32	32	0 -0.4	24.3
DX 20 040 R	DX 20 140 R	DX 20 440 R	DX 20 540 R	DX 22 040 R	DX 22 140 R	DX 23 040 R	DX 23 140 R	40	40	0 -0.4	31.2
DX 20 050 R	DX 20 150 R	DX 20 450 R	DX 20 550 R	DX 22 050 R	DX 22 150 R	DX 23 050 R	DX 23 150 R	50	50	0 -0.5	39.6
DX 20 063 R	DX 20 163 R	DX 20 463 R	DX 20 563 R	DX 22 063 R	DX 22 163 R	DX 23 063 R	DX 23 163 R	63	63	0 -0.6	50.6

**PLIABLE CONDUIT COUPLING - IP40**



Code	Ø conduits	D	d. min.	L	X
DX 52 016	16	17.9	15.9	60	16
DX 52 020	20	21.9	19.9		20
DX 52 025	25	26.8	24.8		25
DX 52 032	32	33.8	31.8	80	30
DX 52 040	40	41.8	39.8		32
DX 52 050	50	51.8	49.8	125	42
DX 52 063	63	64.7	62.7		50

**PLIABLE CONDUIT CAP**



Code	For conduits Ø (mm)	D	De	d.
DX 52 116	16	16	18	15
DX 52 120	20	20	22	19
DX 52 125	25	25	27	24
DX 52 132	32	32	34	31
DX 52 140	40	40	42	39
DX 52 150	50	50	52	49
DX 52 163	63	63	65	62